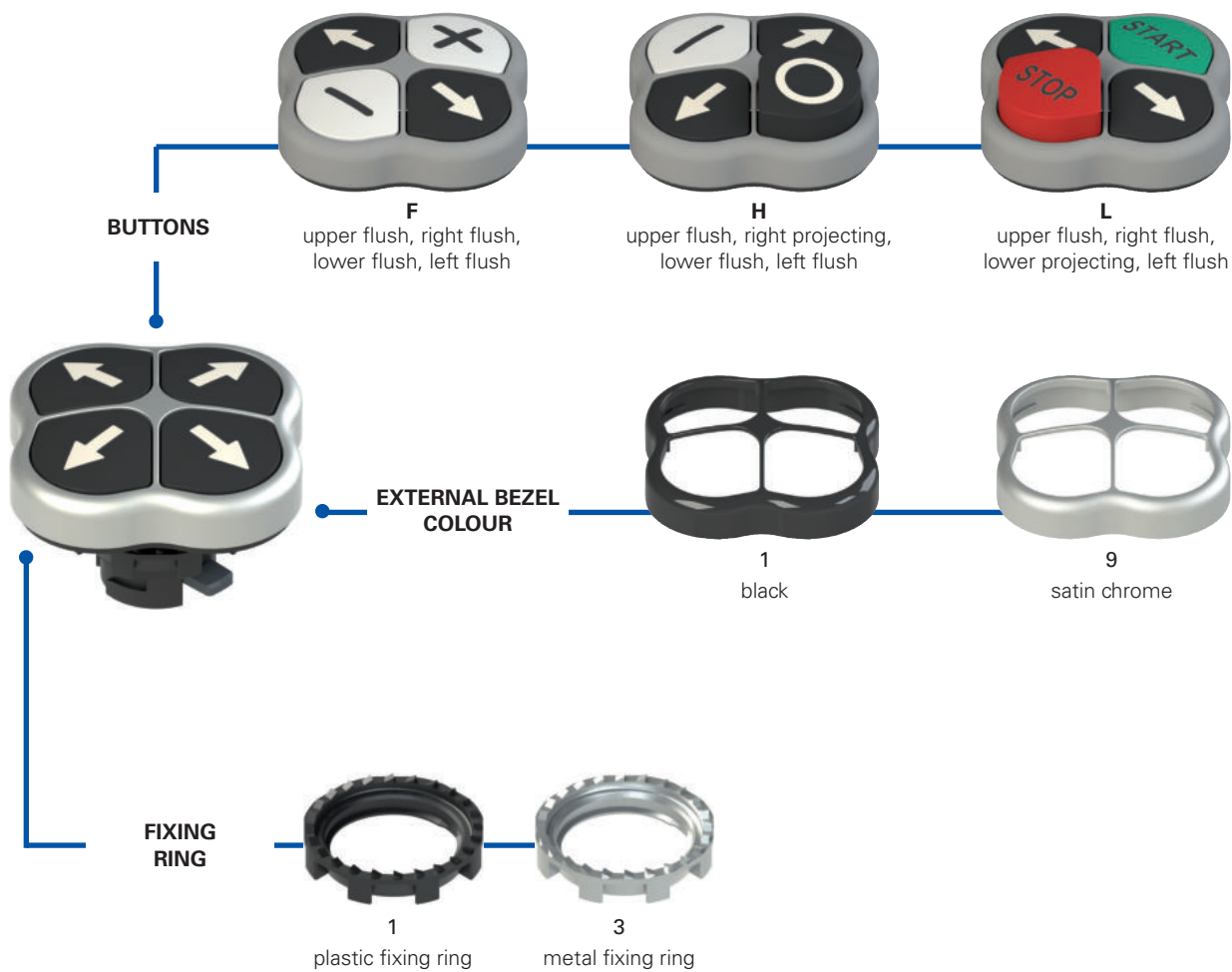


Selection diagram



Code structure

Attention! The feasibility of a code number does not mean the effective availability of a product. Please contact our sales office.

E2 1PQFA1QAAA

Fixing ring and shaped ring

1	plastic fixing ring (standard)
2	plastic fixing ring and shaped ring
3	metal fixing ring
4	metal fixing ring and shaped ring

Buttons

F	upper flush, right flush, lower flush, left flush
H	upper flush, right projecting, lower flush, left flush
L	upper flush, right flush, lower projecting, left flush

Other combinations on request.

Bezel colour

1	black (standard)
9	satin chrome (standard)

Colours and symbols

	upper button		right button		lower button		left button	
	colour	symbol	colour	symbol	colour	symbol	colour	symbol
QAAA	black	↑	black	→	black	↓	black	←
QAAB	green	START	black	→	red	STOP	black	←
QAAC	white	START	black	→	black	STOP	black	←
QAAD	green		black	→	red	O	black	←
QAAE	white		black	→	black	O	black	←
QAAF	white	+	black	→	white	-	black	←
QAAH	black	↑	red	STOP	black	↓	green	START
QAAJ	black	↑	black	STOP	black	↓	white	START
QAAK	black	↑	red	O	black	↓	green	
QAAL	black	↑	black	O	black	↓	white	
QAAM	black	↑	white	-	black	↓	white	+
QAAN	black	↑	white	☹	black	↓	white	🐎

Other combinations on request.



Technical data


General data

Protection degree:	IP67 acc. to EN 60529
Ambient temperature:	-25°C ... +80°C
Safety parameter B _{10D} :	2,000,000
Mechanical endurance:	1 million operating cycles
Max. actuation frequency:	3600 operating cycles/hour
Actuating force at limit of travel:	6.5 N (without contacts)
Maximum travel:	5 mm
Tightening torque of the fixing ring:	2 ... 2.5 Nm
Utilization requirements:	See page 163

In compliance with standards:

IEC 60947-1, IEC 60947-5-1, IEC 60204-1, EN 60947-1, EN 60947-5-1, EN 60204-1, EN IEC 63000, UL 508, CSA 22-2 No. 14

⚠ Installation for safety applications:

Use only contact blocks marked with the symbol . The safety circuit must always be connected to **NC contacts** (normally closed contacts: .1-.2).

Compliance with the requirements of:

Low Voltage Directive 2014/35/EU,
EMC Directive 2014/30/EU,
RoHS Directive 2011/65/EU.

Positive contact opening in conformity with standards:

IEC 60947-5-1, EN 60947-5-1.

Features approved by UL

For Use on a Flat Surface of a Type 1, 4X, 12 and 13
Tightening torque 2.0 Nm

Main features

- Protection degree IP67
- Version with projecting buttons
- Customisation with symbols available

Quality marks:



IMQ approval: CA02.04805
UL approval: E131787
EAC approval: RU C-IT.YT03.B.00035/19

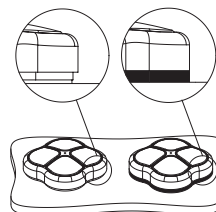
General data

Button profile



In order to be used in different types of application the EROUND line quadruple buttons are now available in two shapes: projecting and flush. The possible choice of shapes, colours and symbols allows various code combinations for buttons.

Shaped ring



The shaped ring can be used when no label holder or other devices are applied; it prevents dirt and other residues from settling between the button and the panel or housing. This turns out to be particularly useful in the sectors where high standards of cleanness and hygiene are required.

Protection degree IP67

IP67

These devices are designed to be used in the toughest environmental conditions and they pass the IP67 immersion test acc. to EN 60529. They can therefore be used in all environments where maximum protection degree of the housing is required.

Customisable

In order to suit the various requests and needs of the customers, Pizzato Elettrica offers the possibility to customize the quadruple buttons with indelible laser inscriptions and symbols.

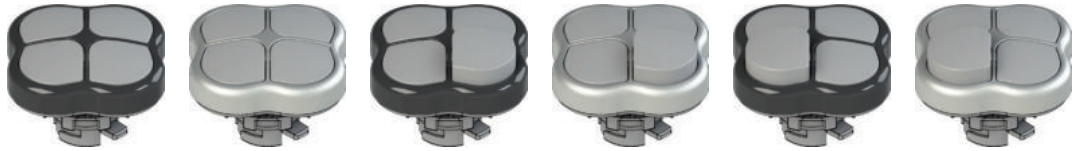
Metal fixing ring



The fixing ring in metal is particularly suitable for those applications which require tighter fitting of the panel-mounted device, such as for example in metal panels having holes without reference notches.



Selection table for quadruple buttons



Actuator colour and engraving (starting from the top and clockwise)	upper button flush right button flush lower button flush left button flush		upper button flush right button projecting lower button flush left button flush		upper button flush right button projecting lower button projecting left button flush	
	black bezel	Satin chrome bezel	black bezel	Satin chrome bezel	black bezel	Satin chrome bezel
 "↑" black button "→" black button "↓" black button "←" black button	E2 1PQFA1QAAA	E2 1PQFA9QAAA	-	-	-	-
 "START" green button "→" black button "STOP" red button "←" black button	E2 1PQFA1QAAAB	E2 1PQFA9QAAAB	-	-	E2 1PQLA1QAAAB	E2 1PQLA9QAAAB
 "START" white button "→" black button "STOP" black button "←" black button	E2 1PQFA1QAAAC	E2 1PQFA9QAAAC	-	-	E2 1PQLA1QAAAC	E2 1PQLA9QAAAC
 "I" green button "→" black button "O" red button "←" black button	E2 1PQFA1QAAAD	E2 1PQFA9QAAAD	-	-	E2 1PQLA1QAAAD	E2 1PQLA9QAAAD
 "I" white button "→" black button "O" black button "←" black button	E2 1PQFA1QAAAE	E2 1PQFA9QAAAE	-	-	E2 1PQLA1QAAAE	E2 1PQLA9QAAAE
 "↑" white button "→" black button "↓" white button "←" black button	E2 1PQFA1QAAAF	E2 1PQFA9QAAAF	-	-	-	-
 "START" green button "STOP" red button "→" black button "START" green button "↓" black button	E2 1PQFA1QAAH	E2 1PQFA9QAAH	E2 1PQHA1QAAH	E2 1PQHA9QAAH	-	-
 "STOP" black button "START" black button "→" black button "STOP" black button "↓" black button	E2 1PQFA1QAAJ	E2 1PQFA9QAAJ	E2 1PQHA1QAAJ	E2 1PQHA9QAAJ	-	-
 "I" green button "O" red button "→" black button "I" green button "↓" black button	E2 1PQFA1QAAK	E2 1PQFA9QAAK	E2 1PQHA1QAAK	E2 1PQHA9QAAK	-	-
 "O" black button "I" black button "→" black button "O" black button "↓" black button	E2 1PQFA1QAAAL	E2 1PQFA9QAAAL	E2 1PQHA1QAAAL	E2 1PQHA9QAAAL	-	-
 "↑" white button "→" black button "↓" white button "←" black button	E2 1PQFA1QAAAM	E2 1PQFA9QAAAM	-	-	-	-

Other combinations on request.

Complete units



Actuator colour and engraving (starting from the top and clockwise)	Contacts				Satin chrome bezel
	pos. 3	pos. 2	pos. 4	pos. 1	
	*"↑" black button			1NO	E2 AC-DXBC2000 E2 1PQFA9QAAA + E2 1BAC21 + E2 CP10G2V1 + E2 CP10G2V1 + E2 CP10G2V1 + E2 CP10G2V1
	*"→" black button			1NO	
	*"↓" black button		1NO		
	*"←" black button				
	*"↶" black button	1NO			

Other combinations on request.

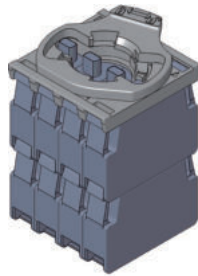
Actuator colour and engraving (starting from the top and clockwise)	Contacts				Satin chrome bezel
	pos. 3	pos. 2	pos. 4	pos. 1	
	*"↑" black button			1NO	E2 AC-DXBC2001 E2 1POHA9QAAH + E2 1BAC21 + E2 CP10G2V1 + E2 CP10G2V1 + E2 CP10G2V1 + E2 CP01G2V1
	*"STOP" red button			1NC ⊕	
	*"↓" black button		1NO		
	*"START" green button	1NO			

Other combinations on request.

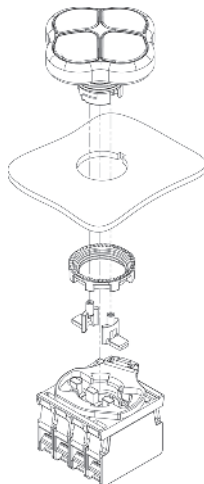
Maximum number of contact blocks

4-slot mounting adapter

Quadruple buttons E2 •PQ••••••



maximum number:
8 contact blocks
2 levels



The assembly of the 2 lateral actuators, supplied with the quadruple button, must be done after the fixing of the button.



contact block

→ The 2D and 3D files are available at www.pizzato.com

Mounting adapter

Packs of 10 pcs.



Article	Description
E2 1BAC21	4-slot mounting adapter for E2 CP•••••• contact block

Shaped ring

Packs of 10 pcs.

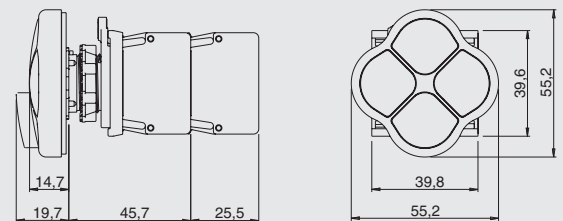


Article	Description
VE GP12M1A	Shaped ring for quadruple button E2 •PQ••••••

Dimensions

All values in the drawings are in mm

Quadruple button



Minimum distances for installation

