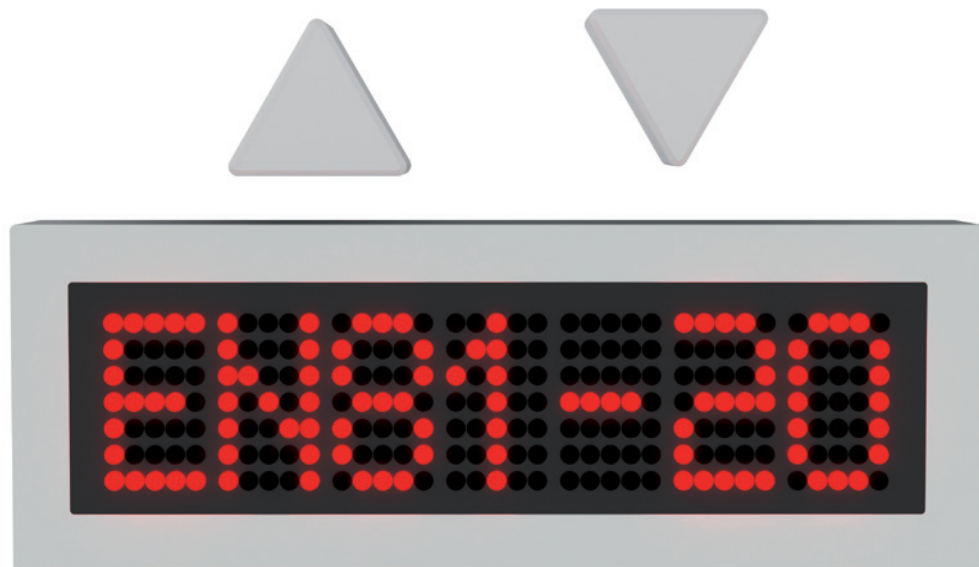


New European Lift Standards



Introduction

On August 6, 2014, CEN (European Committee for Standardization) issued the new lift standards EN 81-20 and EN 81-50 for publication. These new standards have superseded the previous standard EN 81-1/2+A3, which has been withdrawn on 31 August 2017, bringing safety rules for the construction and installation of the lifts in line with current visions.

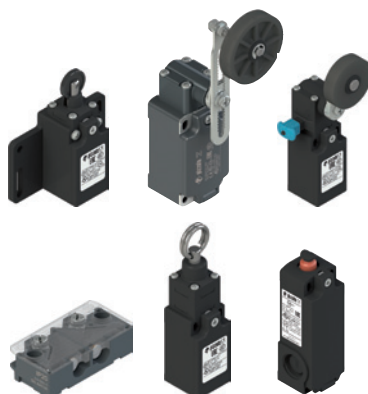
Part 20 is dedicated to passenger and goods passenger lifts while Part 50 will focus on design rules, calculation, examinations and tests of lift components.

Pizzato Elettrica has already updated its lift product range to comply with the new standards and is ready to offer detailed solutions that will specifically satisfy our customer requirements.

POSITION SWITCHES

Safety contacts in compliance with EN 81-20 5.11.2.2.1

- According to EN 60947-5-1 Annex K
- Protection degree higher than IP4x (EN 60529)
- Mechanical durability higher than 10^6 operating cycles



TOP OF CAR INSPECTION BOXES

To facilitate inspection and maintenance, a readily operable inspection control station shall be permanently installed on the car roof (EN 81-20 5.12.1.5)

- Inspection Operation Switch which satisfies the requirements for electric safety devices (EN 81-20 5.11.2)
- Direction push buttons "UP" and "DOWN" protected against accidental operation with the direction of the movement clearly indicated
- Stopping device in conformity with EN 81-20 5.12.1.11 (E-STOP button according to EN 60947-5-5)
- Push button "RUN" protected against accidental operation



SAFETY MODULES FOR LIFT SAFETY CONTROL

- Control of levelling and releveling according to 5.12.1.4 of EN 81-20:2014
- Detection of the uncontrolled movement of the car and activation of a stopping element according to 5.6.7.7 of EN 81-20:2014
- Monitoring of correct lifting or dropping of the machine brake according to 5.6.7.3 of EN 81-20:2014
- Detection of the uncontrolled movement of the car during levelling operation with doors open and activation of a stopping element according to 5.6.7.7 of EN 81-20:2014



BYPASS DEVICE

For maintenance of contacts of the landing door, car door and door locking a bypass device shall be provided in the control panel or emergency and test panel (5.12.1.8.1)

The device(s) shall be a switch protected against unintended use by mechanically movable means permanently installed, or a plug socket combination which shall satisfy the requirements for electric safety devices according 5.11.2 (5.12.1.8.2)

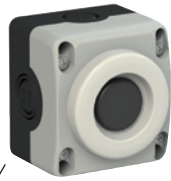
The landing and car door bypass devices shall be identifiable by the word "BYPASS" written on or near to them. In addition, the contacts to be bypassed shall be indicated with the identifiers according to the electrical diagrams (5.12.1.8.3)

- Mobile click cover for protection against unintended use
- Device-locking possible through padlocks
- The lockable protection can be installed on Pizzato's EL series control stations or on any electric panel with appropriate holes



EMERGENCY LIGHT

There shall be emergency lights with an automatically rechargeable emergency supply, which is capable of ensuring a lighting intensity of at least 5 lux for 1h (EN 81-20 5.4.10.4)



- This light shall come on automatically upon failure of the normal lighting supply
- High visibility luminous disc
- IP54 or IP67 protection degree according to IEC 60529

SIGNALLING UNIT

An audible signal at the car and a flashing light under the car shall be activated during movement (EN 81-20 5.12.1.8, ref. G)



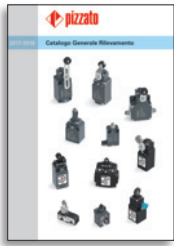
- High visibility flashing luminous disc or LED unit (blinking frequency 1 Hz), yellow or white light
- Alarm buzzer with minimum sound level of 55dB (A) at 1 meter distance
- Continuous or pulse alarm tone available
- IP54 or IP67 or IP69K protection degree according to IEC 60529
- Laser marking

PIT INSPECTION BOXES

There shall be in the PIT a stopping device(s), a permanently installed inspection control station, a socket outlet and a means to switch the well lighting (EN 81-20 5.2.1.5.1)



- Widest and versatile combination of covers
- Sturdiness design
- IP54 or IP65 or IP67 protection degree according to IEC 60529
- Customized socket
- Laser marking
- Availability of the EL AC holder
- Take up a minimal amount of space (60 mm) for the EL AD range



General Catalogue
Detection



General Catalogue
HMI



General Catalogue
Safety



General Catalogue
LIFT



DVD



Web
www.pizzato.com



Pizzato Elettrica s.r.l. Via Torino, 1 - 36063 Marostica (VI) Italy
Phone +39.0424.470.930 - Fax +39.0424.470.955
E-mail: info@pizzato.com - Web site: www.pizzato.com

ZE FGL21A17-ENG

